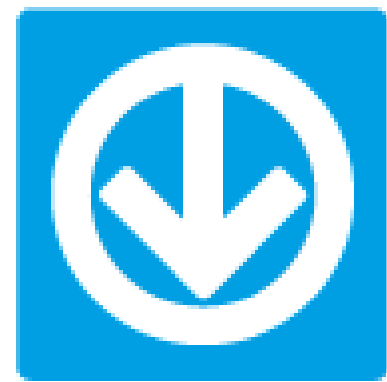


Barriers to Shared Mobility / Obstacles à la mobilité partagée



Sidney Ribaux, Executive director and Founder /
directeur général, co-fondateur

May 18th 2017

équiterre

Founded in 1993

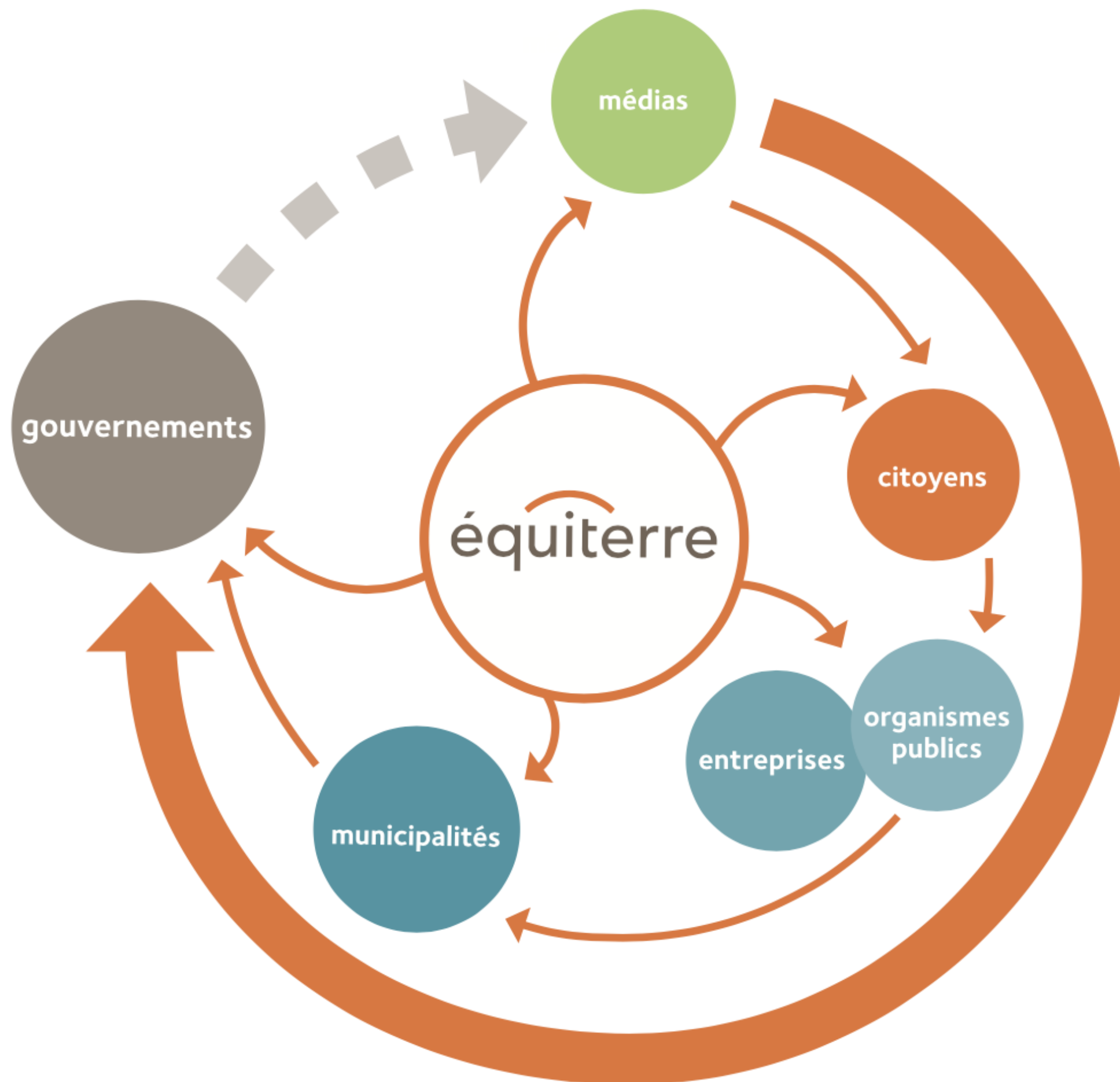


Who are we?

- 150 000 followers
- 20 000 members
- 40 employees
- Offices in Montreal, Quebec, Ottawa



Our ultimate goal is policy change



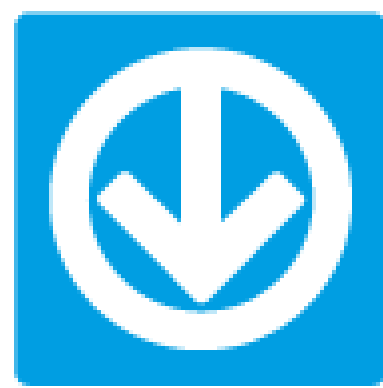


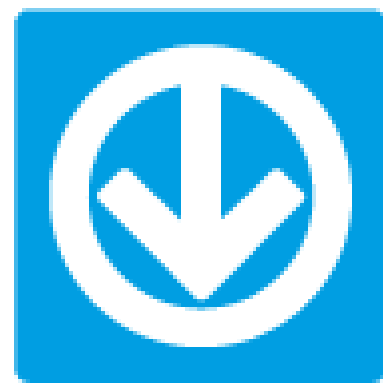


A commuter has other needs

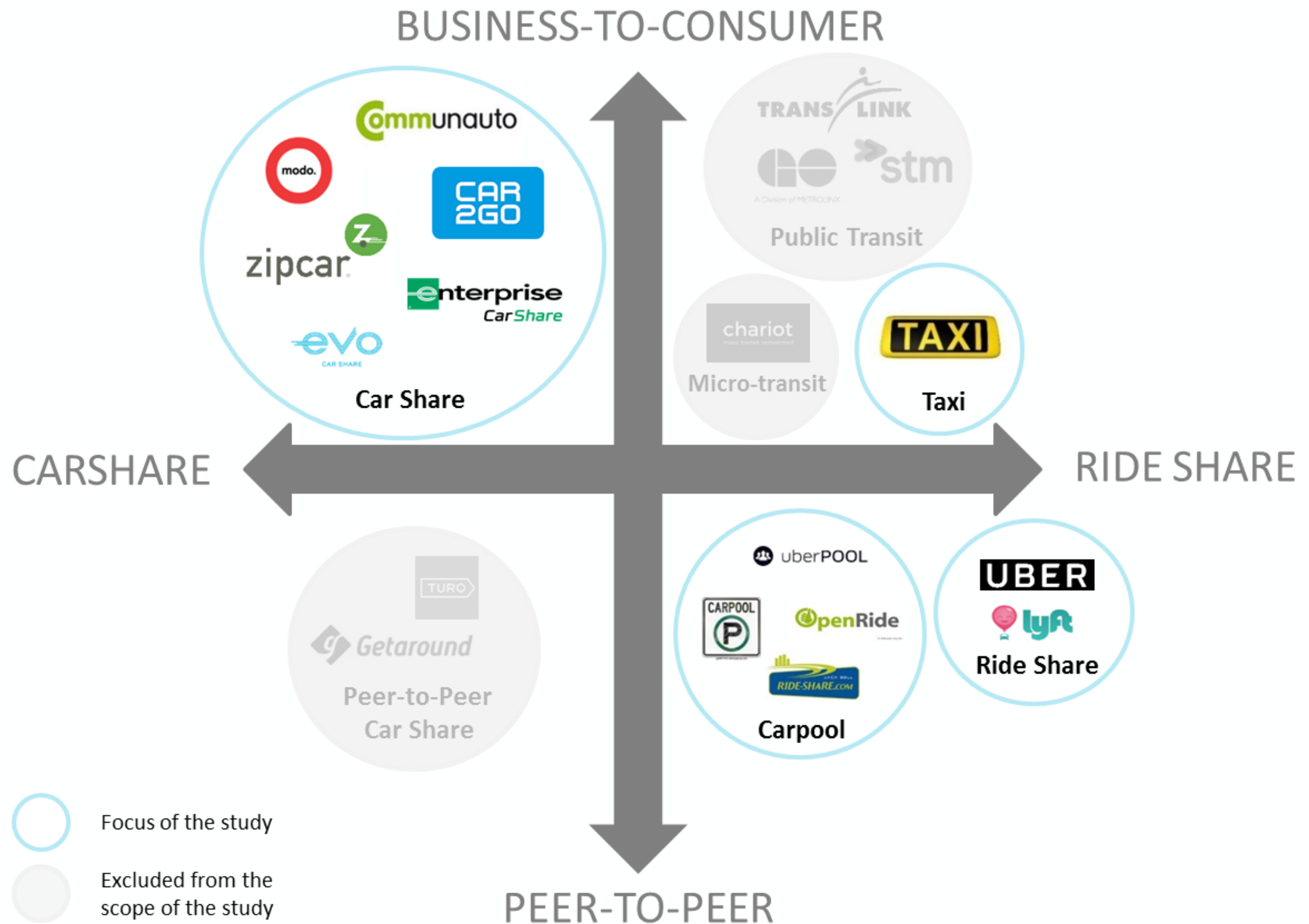


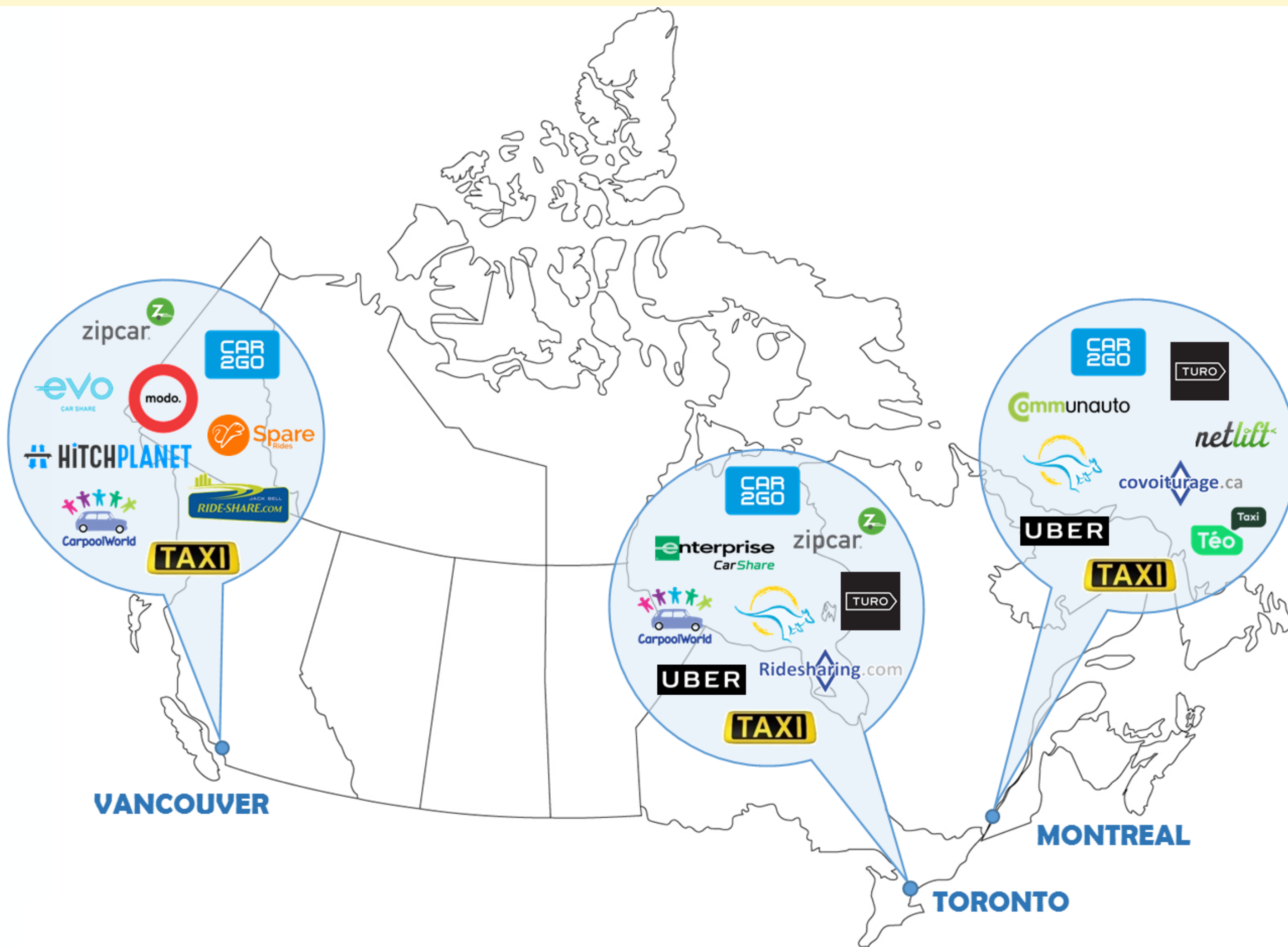
Transportation cocktail / Cocktail transport

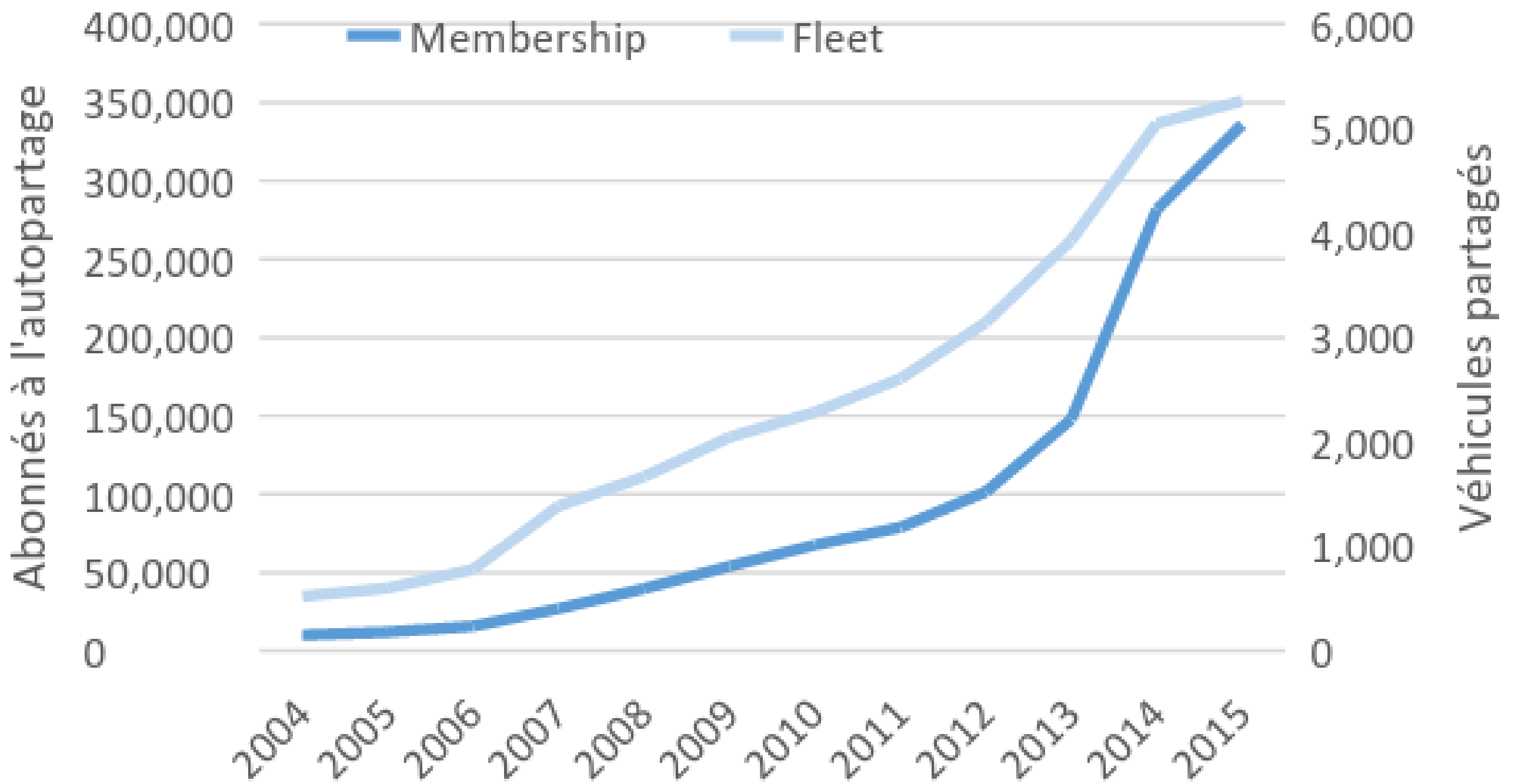


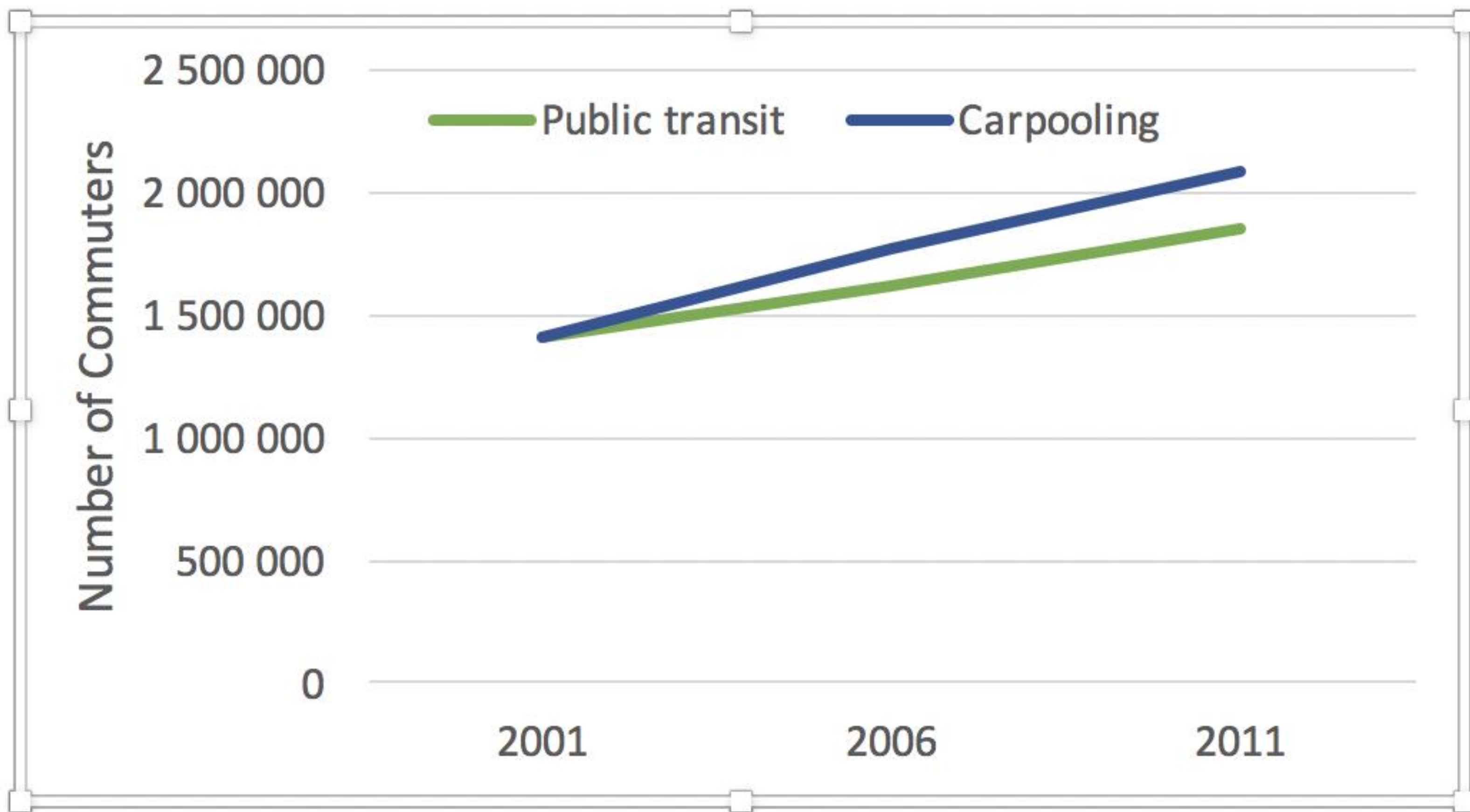














équiterre | Missed opportunities



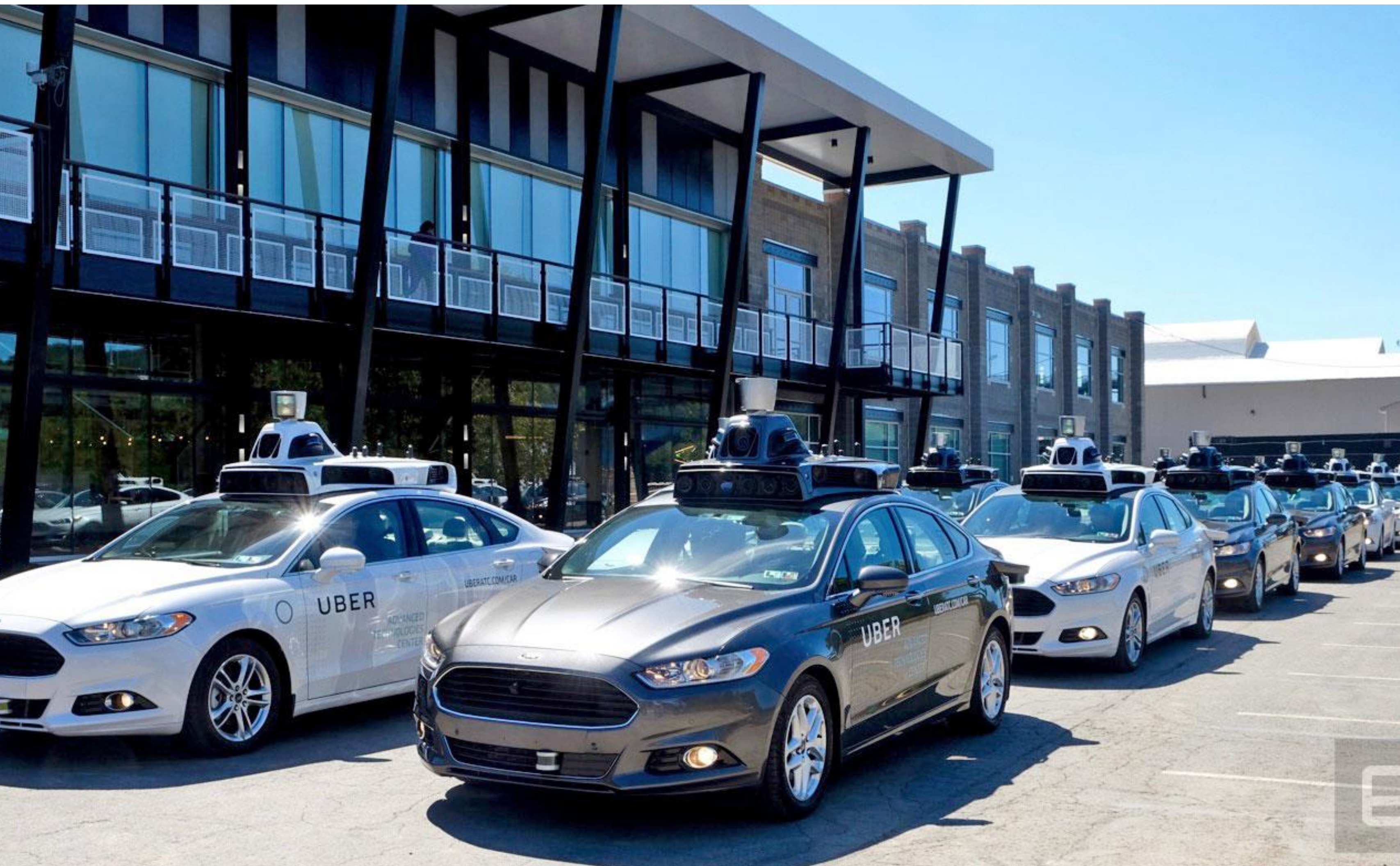
équiterre | Barriers to shared mobility



équiterre

Electrify, don't restrict!





équiterre |

Which future do we want?



équiterre |

Which future do we want?



A developed country isn't a place where the poor have cars. Its a place where the rich use public transportation.

Enrique Penalosa

Merci ! / Thank-You!

Sidney Ribaux

Directeur général | Équiterre

514 522-2000, poste 292 | info@equiterre.org

50, rue Ste-Catherine Ouest, bureau 340,

Montréal (Qc) H2X 3V4

Changez le monde, un geste à la fois.