

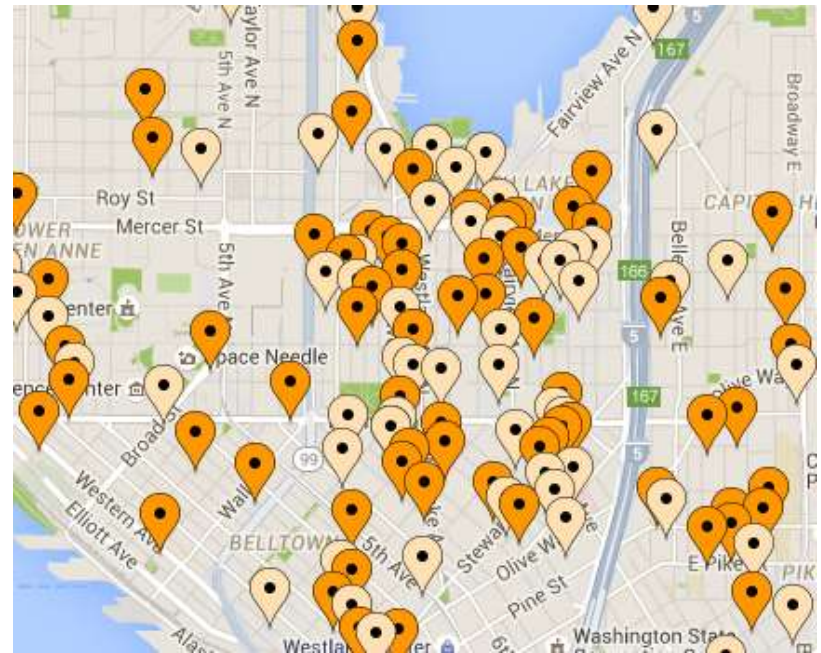
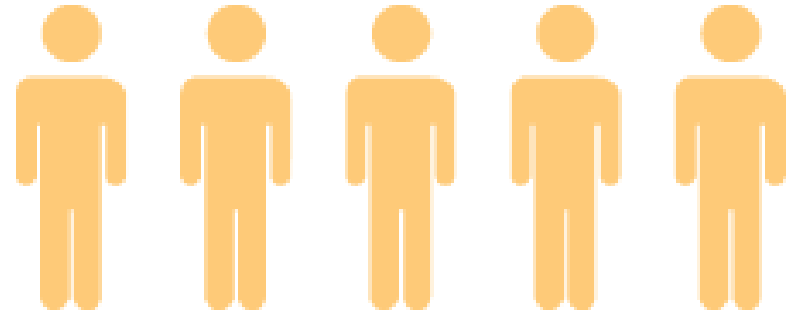
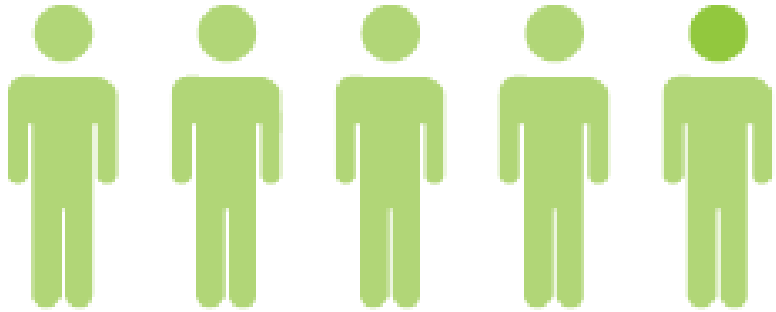


# Shared use mobility in Seattle



Cities: Use of public space for shared mobility  
Carsharing Conference | Sept 22, 2015 | Vancouver, BC  
Kiersten Grove, Seattle Department of Transportation

# What's going on in Seattle?

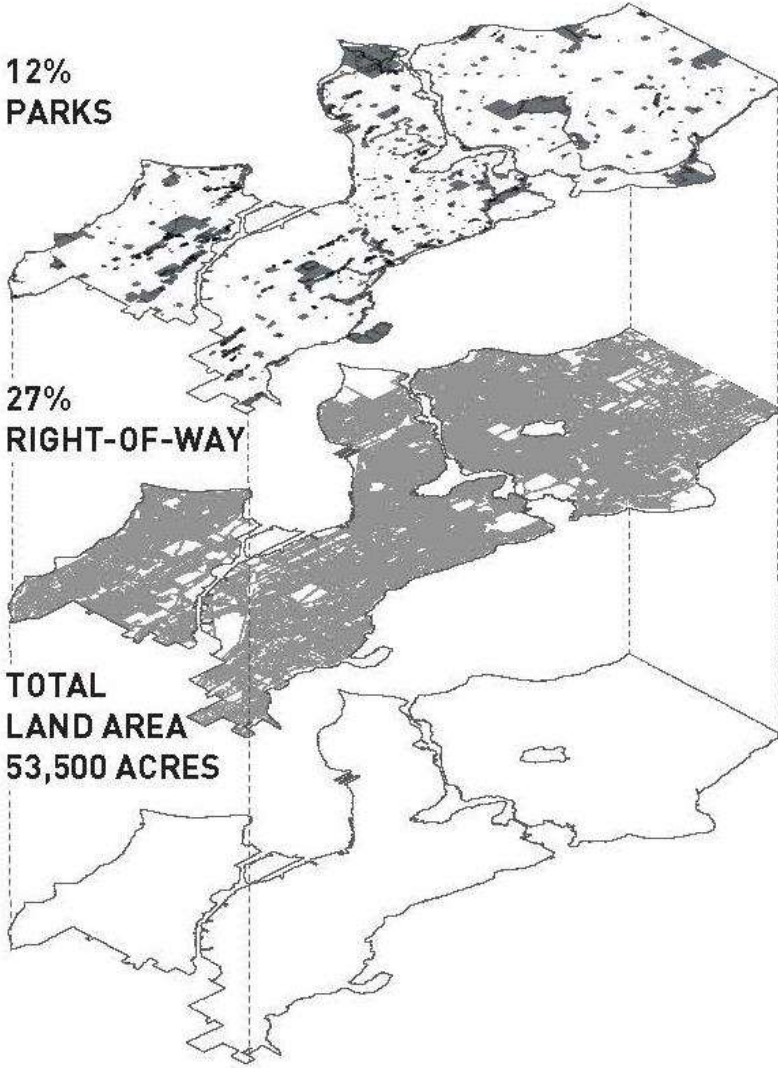


## PERCENTAGE OF SEATTLE LAND AREA

12%  
PARKS

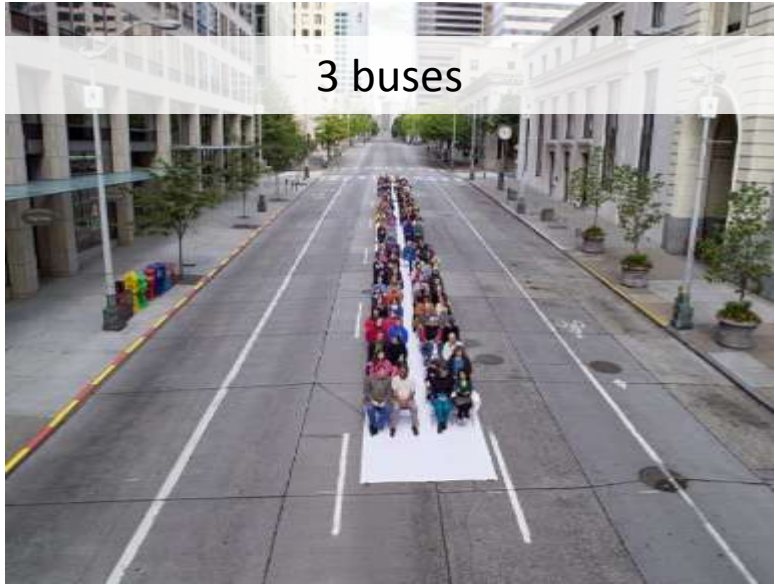
27%  
RIGHT-OF-WAY

TOTAL  
LAND AREA  
53,500 ACRES





177 cars



3 buses

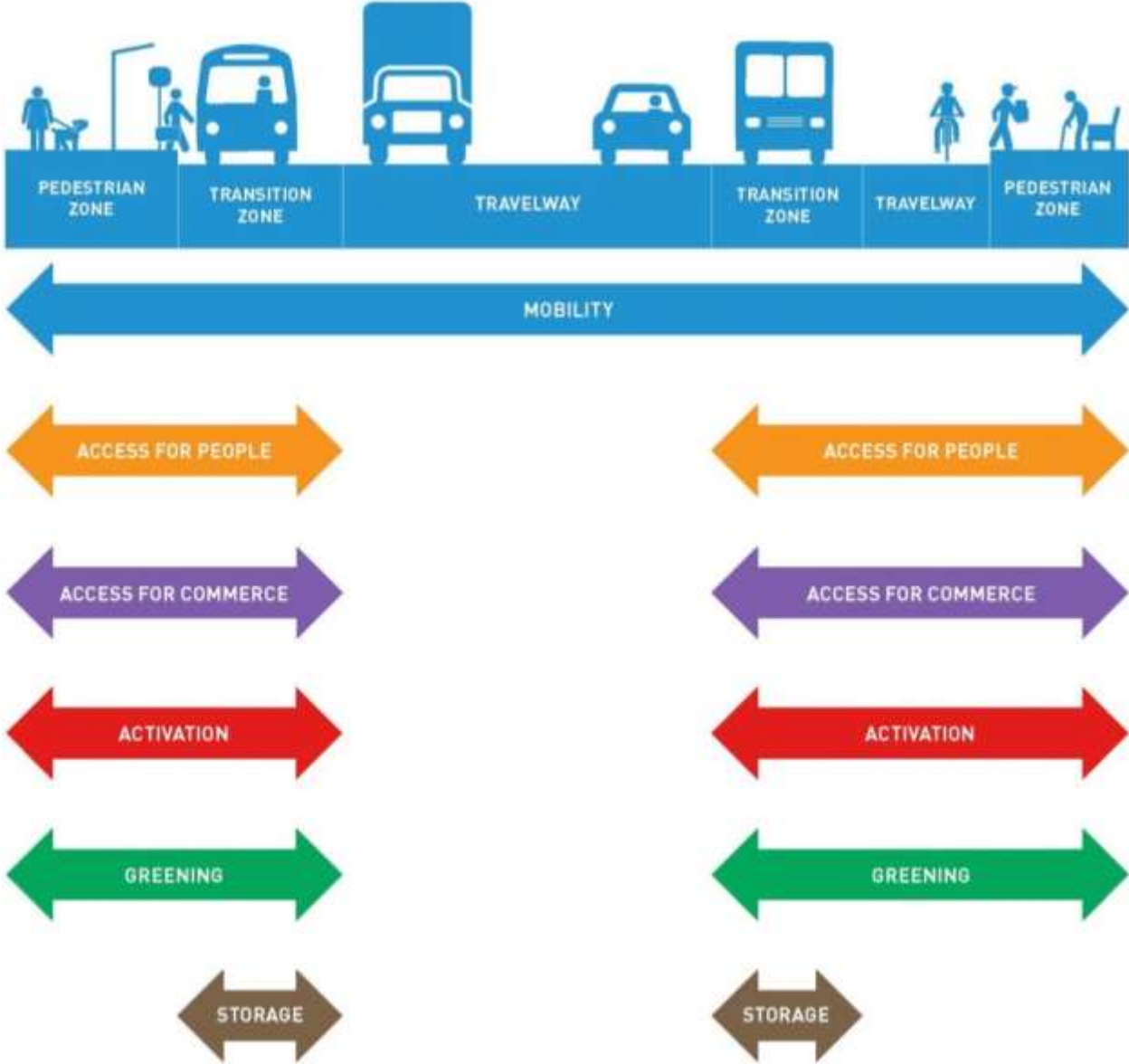


1 light rail train



on their bikes

# How we use the street




# History of car share in Seattle

1999

Flexcar®



2007

zipcar® 

350 car fleet, grew to 20,000 members

2012 – 2013



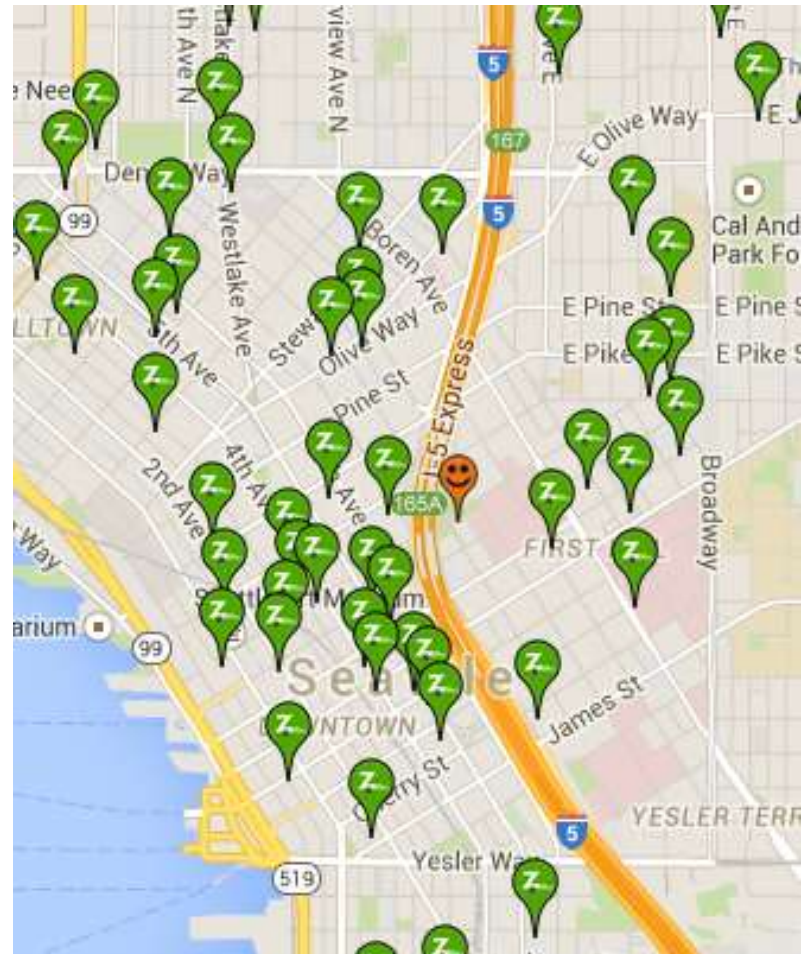
Free-floating car share legislation passes

|           | 2012 | 2013   | 2015   |
|-----------|------|--------|--------|
| # cars    | 330  | 500    | 750    |
| # members |      | 60,000 | 67,000 |

# Zipcar today

- 300+ in off-street locations
- \$3,000/paid areas (6 spaces)
- \$300/unpaid areas (16 spaces)

25% of Seattle members report getting rid of a car and going car free after joining Zipcar



Trending: [University of Washington ranks No. 4 among the world's most innovative universities](#)

# Zipcar partners with Seattle Children's Hospital for one-way car-sharing service

BY TAYLOR SOPER on September 16, 2015 at 10:23 am

Post a Comment

f Share 7

t Tweet 15

Share 56

Reddit

Pin



Zipcar is bringing its new one-way car-sharing service to Seattle — kind of.

The transportation company today announced a partnership with Seattle Children's Hospital for a pilot that allows employees to use Zipcar's ONE>WAY program to and from the hospital's three campuses in Seattle. Hospital staff will be able to use five Zipcar vehicles to travel either one-way or round-trip between the

GeekWire Summit, Oct. 1-2: Tickets here!

## GeekWire Newsletters

Subscribe to GeekWire's free newsletters to catch every headline

Subscribe

## Featured Sponsor

[See More ▶](#)

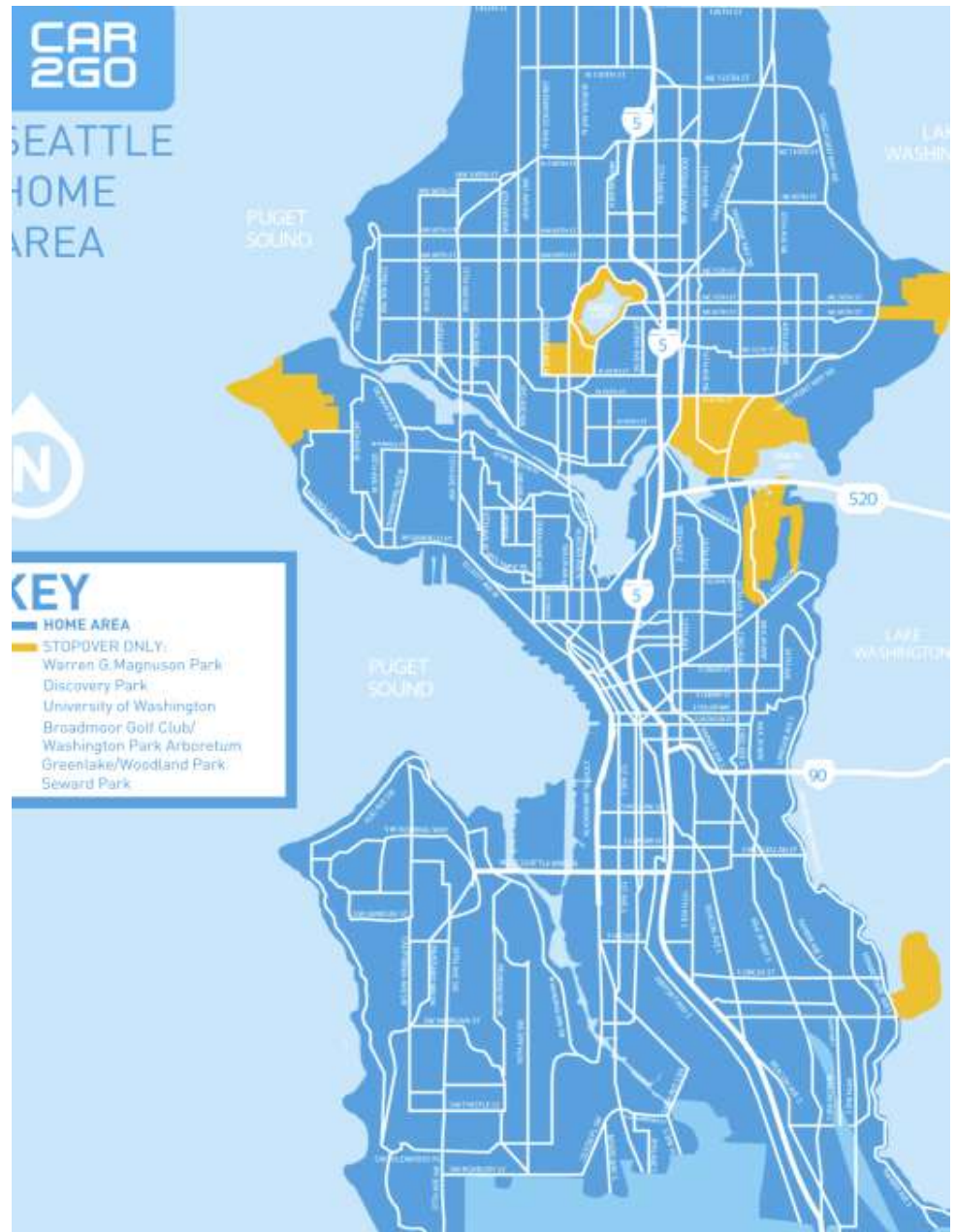
# MOZ

## Send Us a Tip

Have a scoop that you'd like GeekWire to cover? Let us know.

Send Us a Tip

**Map 1: 2013 car2go Home Area**



# Free-floating – car2go today

- Currently 750 permits, more companies coming in 2016
- \$1,730/vehicle/year
- 67,000 members

## SLOG

NEWS

### 2,000 Seattleites Have Given Up a Personal Car in Favor of Car2Go

by Heidi Groover · Jan 14, 2015 at 3:24 pm

Like Share 1.1k Tweet 99

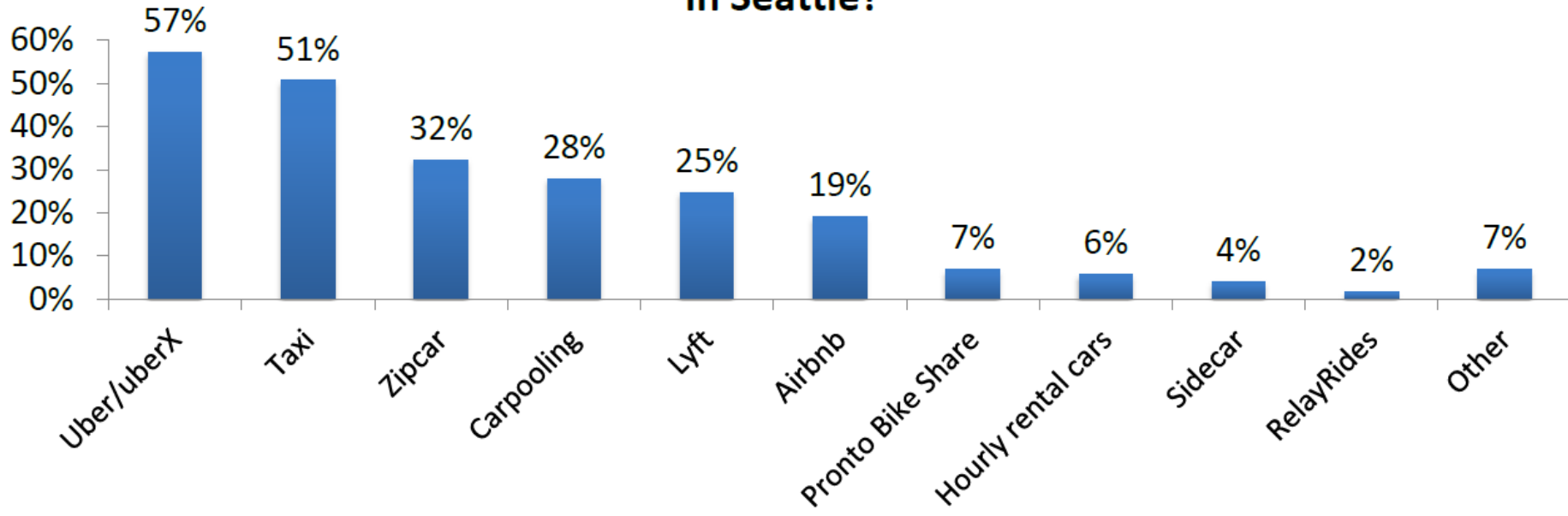


ALPHE PHOTOGRAPHY/SHUTTERSTOCK

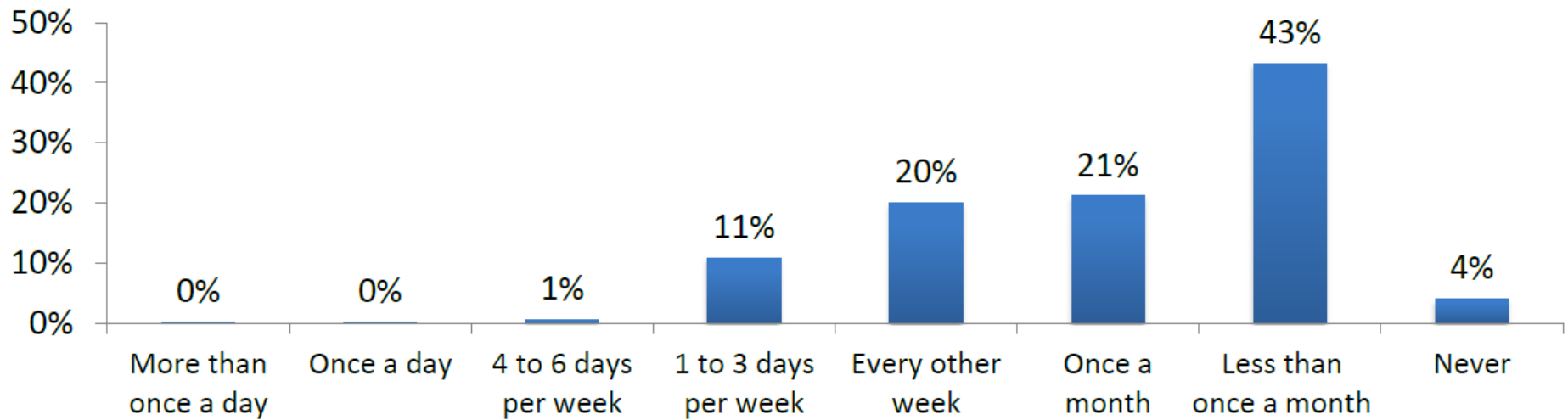
Probably easier to park than whatever you're driving.

The Seattle City Council loves car sharing. Without a minute of conflict yesterday, the council's transportation committee **approved a bill** expanding these services (through which you pay a membership fee and use a smartphone app to find a car nearby, which you

## Besides car2go, what other shared-use services or systems do you use in Seattle?

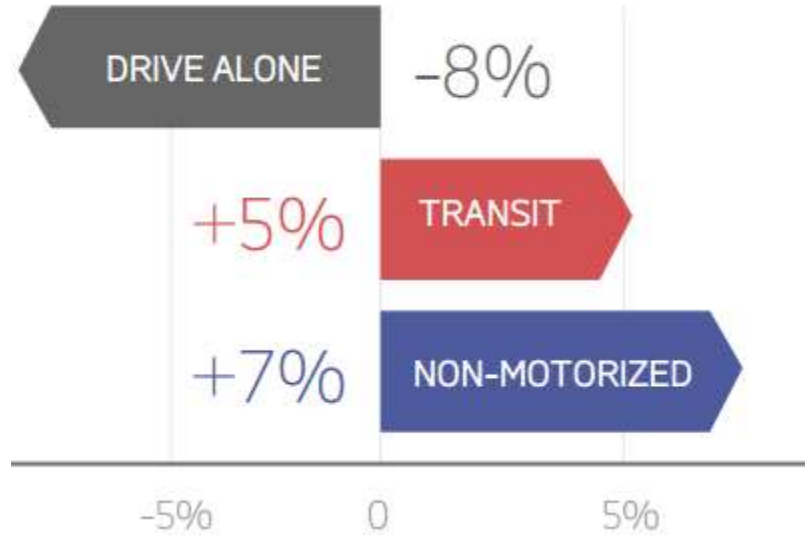


## Frequency of Using Lyft





Coming in 2016!



# What's next?

- Shared use mobility plan
- Potential land use code changes to encourage shared vehicle use
- Determine how many free-floating cars to allow in 2016
- TIGER grant – bike share expansion (TBD)



graphic via [www.move-forward.com](http://www.move-forward.com)

# Transportation as a system

Infrastructure + services

Publicly and/or privately provided

# Questions?

Kiersten.grove@seattle.gov

[www.seattle.gov/transportation](http://www.seattle.gov/transportation)

